

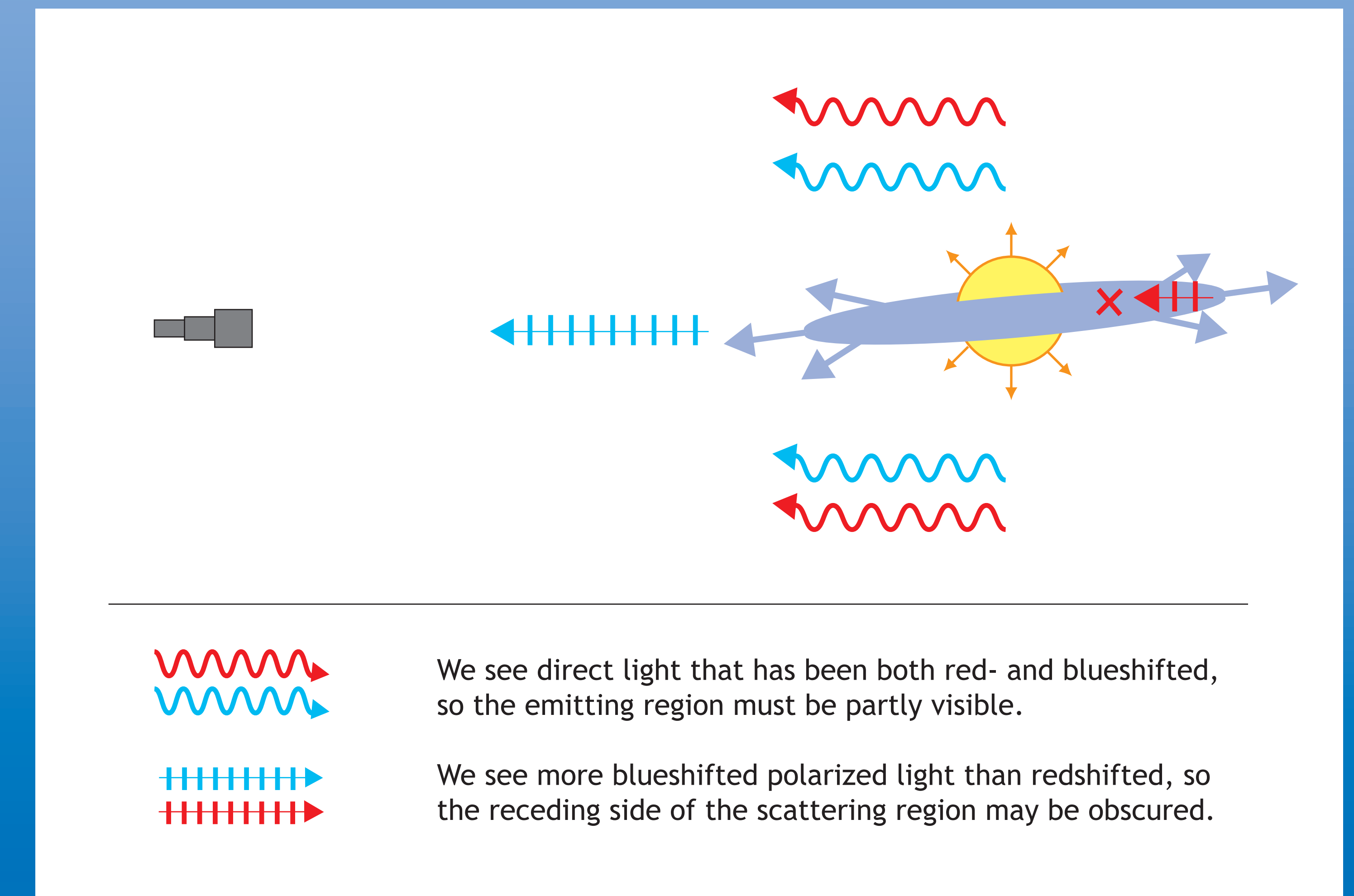
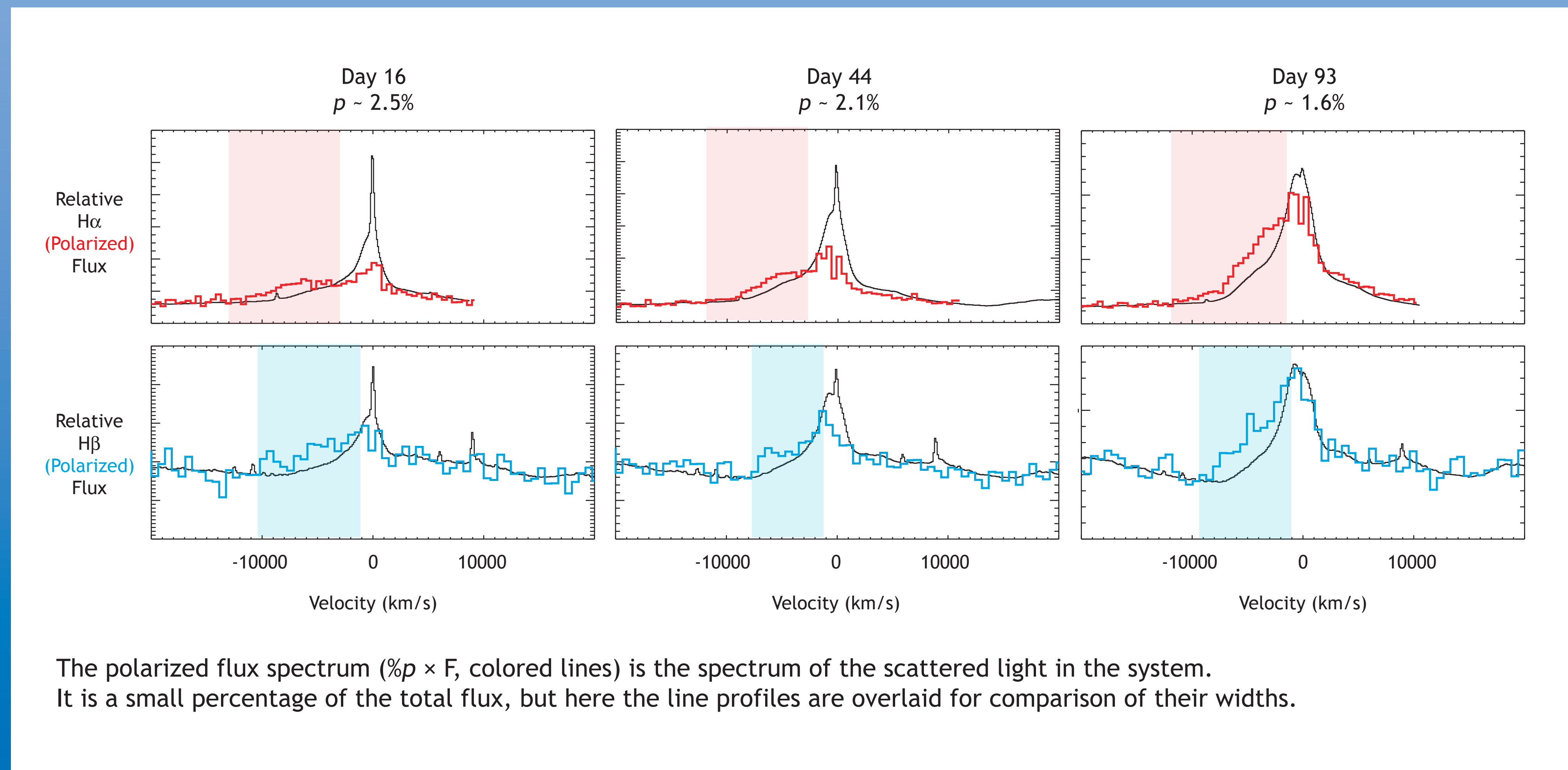
The Dual-Axis Circumstellar Environment of SN 1997eg

Jennifer L. Hoffman, UC Berkeley

Multi-epoch Keck spectropolarimetry yields clues to the structure of the circumstellar material around this Type II_n supernova.

1. Blue Balmer emission line wings in scattered light but not direct light

scattering region obscures its own receding side.



2. Q-U loops instead of straight lines across Balmer and He I profiles

emission and scattering regions are aspherical and misaligned.

